

Conversion of INav databases from Version 5 to Invention Navigator 7 Format

1. Index of Contents

1.1	Conversion of the application datapath	3
1.2	Conversion of the Invention Navigator database	3
1.3	Conversion of original patents	4
1.3.1	Conversion of original patents from the Invention Navigator database	4
1.3.2	Conversion of original patents from the Invention Navigator path	4
1.3.3	Conversion of original patents with a user defined path	4
1.4	Conversion of the applicant classification	4
1.4.1	Conversion of the applicant classification in the Invention Navigator database	4
1.4.2	Conversion of the applicant classification from the Invention Navigator path	5
1.4.3	Conversion of the applicant classification with a user defined path	5
1.5	Conversion of evaluation	5
1.5.1	Conversion of evaluations in the Invention Navigator database	5
1.5.2	Conversion of evaluations from the Invention Navigator path	5
1.5.3	Conversion of evaluations with a user defined path	5
1.5.4	Conversion of evaluations in the application datapath	5
1.6	Things that should be considered if several people share an outsourced database	6

Dear Users,

if you worked with the Invention Navigator 5.x or 6.x before and you want to use these databases with the Invention Navigator 7.0, you have to convert the those databases in the new Invention Navigator database. Below you find the instruction manual. The old database, which should be converted, remains as a copy and will not be changed. A new Invention Navigator database will be created. Databases which were converted into the INav 7.0 format can not be opened with INav 5.0 or 6.0.

Feel free to call us, if you have further questions.

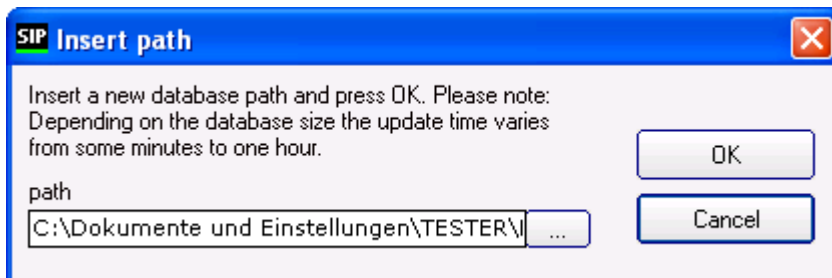
1.1 Conversion of the application datapath

After successfully installing the Invention Navigator, the application datapath is converted during the first start up. In doing so, the path will not change.

This conversion also contains local saved searches (cSearch.db) and programme settings (options.db). The Version 5/6 - files will be saved in the subdirectory INAV6_SAVE inside the application datapath.

1.2 Conversion of the Invention Navigator database

If an Invention Navigator database, was created with an older version of the application it will first have to be converted. For this purpose a window will appear when opening the database.



Here, a new path as well as a new name for the database can be set. Change the path by clicking on the button with the 3 dots.

1.3 Conversion of original patents

1.3.1 Conversion of original patents from the Invention Navigator database

If original patents are contained in the Invention Navigator database they will automatically be copied into an external Image-Cache during the conversion process. Here, the database path will be used by default.

Example:

While converting the database, the following path and name was set:

C:\Users\Administrator\Desktop\default_7.inav

The original patents are now located in the following folder:

C:\Users\Administrator\Desktop\default_7

1.3.2 Conversion of original patents from the Invention Navigator path

If original patents are saved under the Invention Navigator path, they will not automatically be converted. Here you first have to use the Options menu to sync the path of the original patents with the folder containing the old originals. Subsequently, Invention Navigator will restart and when opening the database you have the option to set a new path. The original patents will then be converted in this new path.

1.3.3 Conversion of original patents with a user defined path

If an external specific path was defined for original patents you have the option, when opening the database, to set a new path in which the original documents will be converted.

1.4 Conversion of the applicant classification

1.4.1 Conversion of the applicant classification in the Invention Navigator database

If the applicant classification is located in the Invention Navigator database, it will automatically be converted when converting the old database.

1.4.2 Conversion of the applicant classification from the Invention Navigator path

If the applicant classification is located in the same path as the Invention Navigator database, it will automatically be converted when converting the old database. The path will not change.

1.4.3 Conversion of the applicant classification with a user defined path

If the applicant classification is located in an external and user defined path it will be automatically converted when opening the database. The path will not change.

1.5 Conversion of evaluation

1.5.1 Conversion of evaluations in the Invention Navigator database

If the evaluations are located in the Invention Navigator database they will automatically be converted when converting the old database.

1.5.2 Conversion of evaluations from the Invention Navigator path

If evaluations are located in the same path as the Invention Navigator database they will automatically be converted when converting the old database. The path will not change.

1.5.3 Conversion of evaluations with a user defined path

If evaluations are located in an external and user defined path they will be automatically converted when opening the database. The path will not change.

1.5.4 Conversion of evaluations in the application datapath

If evaluations are located in the application datapath, they were automatically converted when the application will be opened.

1.6 Things that should be considered if several people share an outsourced database

If multiple persons share one single outsourced database it should be arranged in advance who will convert the outsourced database. Subsequently, the old folder in which the file was located can be renamed in i.e. Old. Now the only thing left to do is to rename the new database's folder so it has the same name as the old folder. This ensures that the database will only be converted once and that the colleagues will not have to perform any adaptations in the Invention Navigator settings, as the path will remain identical to the previous settings.

This, however, should only be carried out if all colleagues work with Invention Navigator 7, as the new database cannot be opened with Invention Navigator 6 or older versions.

Example:

Old Image-Cache: *N:\GemeinsameDateien\ImageCache*
New Image-Cache: *N:\GemeinsameDateien\ImageCacheNeu*

Rename the old Image-Caches in *N:\GemeinsameDateien\ImageCacheOld*
Rename the new Image-Caches in *N:\GemeinsameDateien\ImageCache*

Now the new (converted) Image Cache can be used without changing the user settings.